

About ActiveLED™ Lighting

- ▶ Proven LED lighting technology for commercial and industrial applications
- ▶ Delivers better light at significantly lower wattage
- ▶ Significant customer installations
- ▶ Widest variety of Indoor and Outdoor LED lighting fixtures in the industry
- ▶ Reduces lighting energy consumption by 50-90% or more
- ▶ Long life and far greater reliability over conventional lighting
- ▶ Increases the directional control of the light to reduce light pollution and wasted energy
- ▶ Enables control and management of lights for maximum efficiency
- ▶ Warranty - Best in the industry: 10 years on LED elements, 5 years on materials and

About Ringdale®

- ▶ At the forefront of technology innovations since 1977
- ▶ Leading-edge solutions in networking, carbon emission and energy-reducing technologies
- ▶ All products made in the USA
- ▶ Multiple U.S. Patents and Patents pending
- ▶ ISO 9001 certified

Evantek Pte Ltd

16 Kallang Bahru #07-34/35/36 Singapore 339156
T. +65-62958033 | F. +65-62958022
sales@evantek.com

Ringdale Inc., 101 Halmar Cove, Georgetown, Texas, 78628, USA
Phone: +1 512-288-9080 | Fax: +1 512-288-7210

© 2010 Ringdale, Inc. Products displayed may be covered by one or more U.S. Patents and Patents Pending.
Specifications are subject to change without notice. RDLED8/10





Overview

The Ringdale ActiveLED™ Street and Parking Lot Light provides an energy-efficient alternative to conventional high wattage parking lot lights without sacrificing light output. By incorporating Ringdale's patented LED technology, the LED Street and Parking Lot Light achieves energy savings of 50-85 percent over conventional lighting sources. The intelligent controller and options enable advanced energy management capabilities, thereby providing additional savings. The warranted 90,000-hour LED lumen life is superior to any other light available today. Imagine a light lasting for 20 years when used an average of 12 hours a day.

Technical Specifications

Dimensions	30"L x 6"D x 4"H (76.2 x 15.24 x 10.16 cm)
Mounting	Square or round pole mounted
Light Output	5280 LED Device Lumens 3700 Fixture Lumens (total measured lumen output from fixture)
Fixture Watts	54 watts
Efficacy	110 LED Device Lumens/Watt
CCT	5500K
Power Factor	>.95
Input Voltage	100-277V AC
Lumen Lifetime	90,000 hours (95% Luminous Flux)
Weight	16 lbs. (7.2 Kg)
Listings and Tests	UL and CE listed, suitable for damp locations. LM-79, LM-80, RoHS compliant

Key Features & Benefits

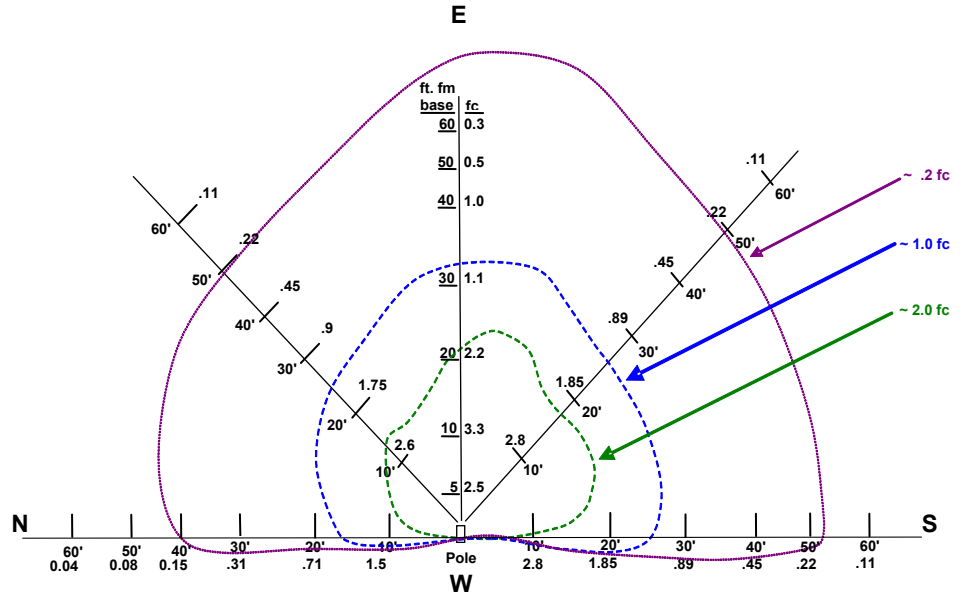
- Significant Energy Savings – Replaces up to 400 watt fixture with 54 watt fixture
- Ideal lighting for streets, parking lots, walkways and other outdoor applications
- Replaces yellow or dim lighting with more visible “white light” for uniformity of coverage and enhancing security
- LEDs do not emit ultraviolet light so bugs are not attracted to the ActiveLED fixture
- Full cut-off directional light (dark-sky compliant)
- Environmentally safe lighting
 - Zero mercury content
 - Eliminates disposal of hazardous material
 - Facilitates LEED points
- Options
 - Motion Sensor
 - Dusk-to-Dawn Sensor
 - Digital Dimmer
 - Battery Backup
 - Finish: Silver, Charcoal Grey and Brown, custom colors also available
- Warranty: 10 years on LED elements, 5 years on materials and workmanship
- Designed and manufactured exclusively by Ringdale

ActiveLED™ SL Series

Street & Parking Lot Light

Photometric Light Level Data for SL-48 LED Street/Parking Lot Light

The schematic shows the light level measurements for the SL-48 LED Street/Parking Lot Light at a 30' mounting height, 36" from the surface.



Luminance Recommendations by International Dark-Sky Association

Application		Low (LUX/ftc)	High (LUX/ftc)	Surface Reading
Roadway	High	6.4/0.6	17/2/1.6	Expressway, Major Rd, Collector Rd
	Low	3.2/0.3	8.6/0.8	Freeway Class A & B, Collector Rd, Local Rd
		Avg	Min	Horizontal Reading, 3' above Surface
Parking	High	38.7/3.6	9.7/.09	Major League Athletic Events, Major Cultural or Civic Events, Regional Shopping Centers, Fast Food Facilities
	Med	25.8/2.4	6.4/0.6	Shopping Centers, Cultural, Civic, Rec Events, Office, Airports, Commuter Lots, Residential Complex, Hospital
	Low	8.6/.08	2.2/0.2	Neighborhood Parking, Industrial Employee Parking, Educational Facilities, Churches



Overview

The Ringdale ActiveLED™ "Shoe Box" Parking Lot Light provides an energy-efficient alternative to conventional high wattage parking lot lights without sacrificing light output. By incorporating Ringdale's patented LED technology, the LED Shoe Box Parking Lot Light achieves energy savings of 50-85 percent over conventional lighting sources. The intelligent controller and options enable advanced energy management capabilities, thereby providing additional savings. The warranted 90,000-hour LED lumen life is superior to any other light available today. Imagine a light lasting for 20 years when used an average of 12 hours a day.

Technical Specifications

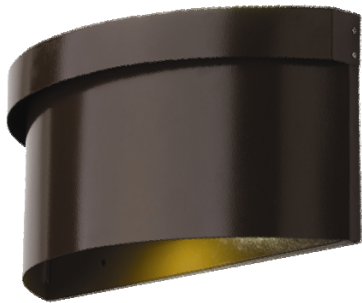
Dimensions	18"(L) x 14"(W) x 7"(H) (45.7 x 35.6 x 17.8 cm)
Mounting	Square or round pole mounted
Light Output	5280 LED Device Lumens
Fixture Watts	52 watts
Efficacy	110 LED Device Lumens/Watt
CCT	5500K
Power Factor	>.95
Input Voltage	100-277V AC
Lumen Lifetime	90,000 hours (95% Luminous Flux)
Weight	24.2 lbs. (11.0 Kg)
Listings and Tests	UL and CE listed, suitable for damp locations. LM-80, RoHS compliant

Key Features & Benefits

- Significant Energy Savings – Replaces up to 400 watt fixture with 52 watt fixture
- Ideal lighting for parking lots, walkways and other outdoor applications
- Replaces yellow or dim lighting with more visible "white light" for uniformity of coverage and enhancing security
- LEDs do not emit ultraviolet light so bugs are not attracted to the ActiveLED fixture
- Full cut-off directional light (dark-sky compliant)
- Lower heat emission with small infrared footprint
- Environmentally safe lighting
 - Zero mercury content
 - Eliminates disposal of hazardous material
 - Facilitates LEED points
- Options
 - Motion Sensor
 - Dusk-to-Dawn Sensor
 - Digital Dimmer
 - Battery Backup
 - Finish: Silver, Charcoal Grey and Brown, custom colors also available
- Warranty: 10 years on LED elements, 5 years on materials and workmanship
- Designed and manufactured exclusively by Ringdale

ActiveLED™ WLo Series

Exterior Wall Sconce



Overview

The Ringdale ActiveLED™ WLi Series Exterior Wall Sconce takes a clean, modern approach to general exterior accent lighting with a simple yet elegant design. By incorporating Ringdale's patented LED technology, the Exterior Wall Sconce achieves energy savings of 50-85 percent over conventional lighting sources. The intelligent controller and options enable advanced energy management capabilities, thereby providing additional savings. The warranted 90,000-hour LED lumen life is superior to any other light available today. Imagine a light lasting for 20 years when used an average of 12 hours a day.

Technical Specifications

Dimensions	18.5"W x 8.5"L x 6.5"D (47.0 x 21.6 x 16.5 cm)
Mounting	Standard wall sconce bolts
Light Output	660 or 1980 LED Device Lumens
Fixture Watts	Up to 21 watts
Efficacy	110 LED Device Lumens/Watt
CCT	3500 K or 5500K
Power Factor	>.95
Input Voltage	100-277V AC
Lumen Lifetime	90,000 hours (95% Luminous Flux)
Weight	9 lbs. (4 Kg)
Listings and Tests	UL and CE listed, suitable for damp locations. RoHS compliant, LM-80

Key Features & Benefits

- Significant Energy Savings – Replaces up to 150 watt fixture with 21 watt or lower fixture
- Ideal for exterior wall mount lighting applications
- Replaces yellow or dim lighting with more visible “white light” for uniformity of coverage and enhancing security
- LEDs do not emit ultraviolet light so bugs are not attracted to the ActiveLED fixture
- Full cut-off directional light (dark-sky compliant)
- Environmentally safe lighting
 - Zero mercury content
 - Eliminates disposal of hazardous material
 - Facilitates LEED points
- Options
 - Digital Dimmer
 - Occupancy Sensor
 - Dusk-to-Dawn Sensor
 - Battery Backup
- Warranty: 10 years on LED elements, 5 years on materials and workmanship
- Designed and manufactured exclusively by Ringdale

ActiveLED™ WLo Series

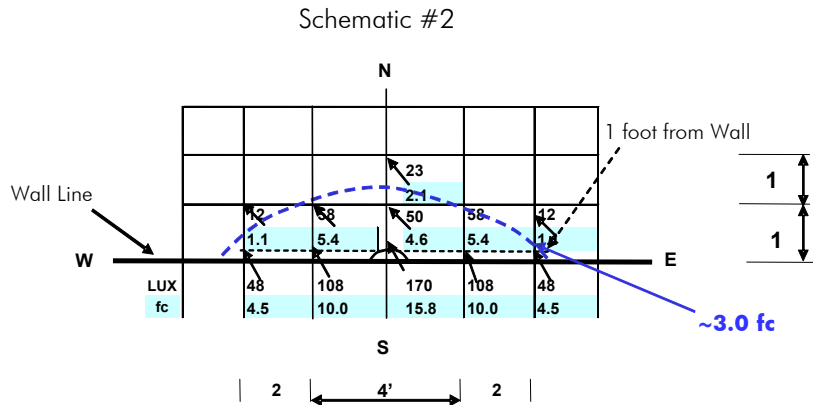
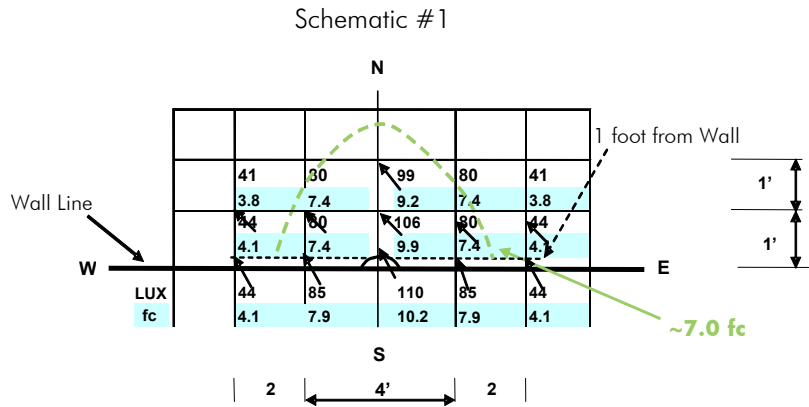
Exterior Wall Sconce

Photometric Light Level Data for WLo-5515-UD LED Exterior Wall Sconce

The schematics at right show the light level measurements for an LED Exterior Wall Sconce at a 4' height from the wall base.

Schematic #1 - Down View: The data shows that the LED Exterior Wall Sconce provides approximately 7 footcandles coverage in a 2.5' x 6' area below the light.

Schematic #2 - Up View: The data shows that the LED Exterior Wall Sconce provides approximately 3 footcandles coverage in a 1.5' x 8' upright area. The light is directed primarily at the wall surface.



ActiveLED™ WBL Series

Walkway Bollard Light



Overview

The Ringdale ActiveLED™ WBL Series Walkway Bollard Light combines style, sturdy construction and superior LED lighting performance to create a contemporary, all-weather bollard for bright, glare-free pedestrian illumination. By incorporating Ringdale's patented LED technology, the Walkway Bollard Light achieves energy savings of up to 90 percent over conventional lighting sources. The intelligent controller and options enable advanced energy management capabilities, thereby providing additional savings. The warranted 90,000-hour LED lumen life is superior to any other light available today. Imagine a light lasting for 20 years when used an average of 12 hours a day.

Technical Specifications

Dimensions	4 feet tall, 4" diameter aluminum pole
Installation & Mounting	Universal bolt pattern on base plate connects to existing bolt fittings
Light Output	660 LED Device Lumens
Fixture Watts	9 watts
Efficacy	110 LED Device Lumens/Watt
CCT	3500K or 5500K
Power Factor	>.95
Input Voltage	100-277V AC
Lumen Lifetime	90,000 hours (95% Luminous Flux)
Weight	10.8 lbs. (4.9 Kg)
Listings and Tests	UL and CE listed, suitable for damp locations. RoHS compliant, LM-80

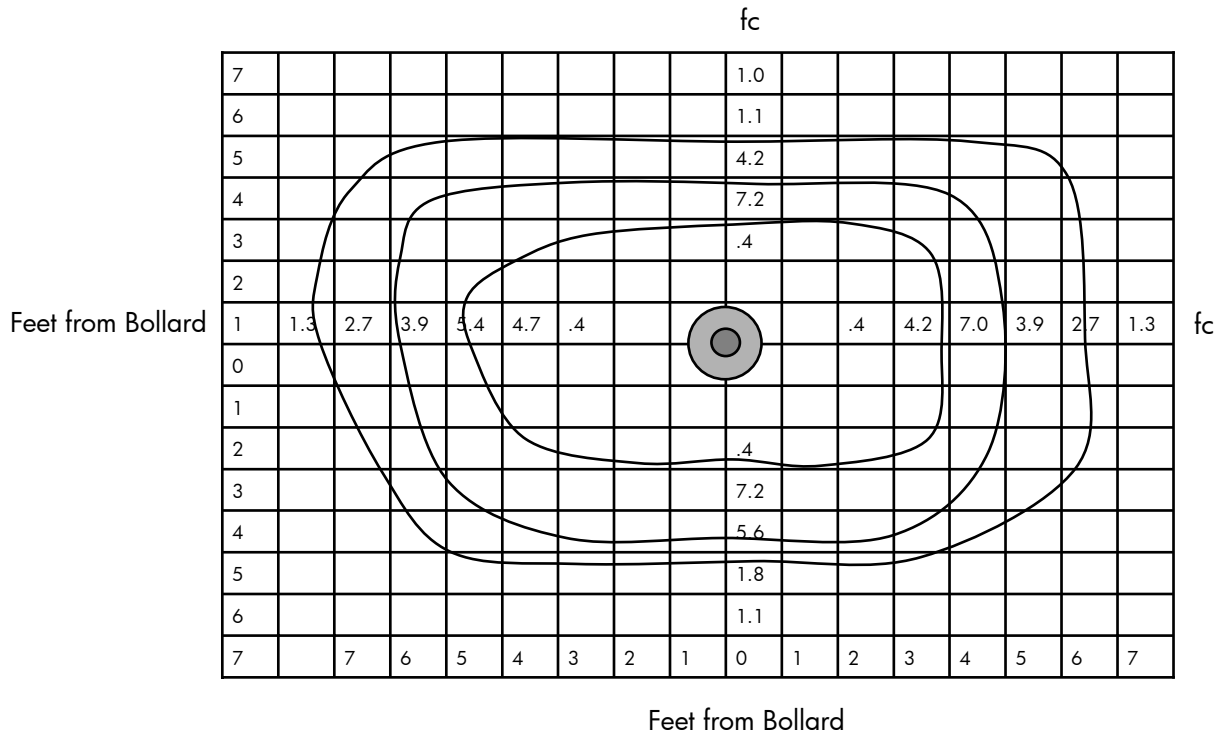
Key Features & Benefits

- Significant Energy Savings – Replaces up to 100 watt fixture with 9 watt fixture
- Ideal lighting for illuminating walkways and defining building entrances
- Replaces yellow or dim lighting with more visible “white light” for uniformity of coverage and enhancing security
- LEDs do not emit ultraviolet light so bugs are not attracted to the ActiveLED fixture
- Increases control over light footprint to produce directional light and minimize light spillage and wasted energy
- Lower heat emission with small infrared footprint
- Environmentally safe lighting
 - Zero mercury content
 - Eliminates disposal of hazardous material
 - Facilitates LEED points
- Warranty: 10 years on LED elements, 5 years on materials and workmanship
- Designed and manufactured exclusively by Ringdale

ActiveLED™ WBL Series Walkway Bollard Light

Photometric Light Level Data for Walkway Bollard Light

The schematic shows the light level measurements for a single 9 watt LED Bollard Light. The results illustrate the brightness and uniformity of the light in all four directions.



ActiveLED™ WP Series

Exterior Wall Pack Light



Overview

The Ringdale ActiveLED™ WP Series Exterior Wall Pack Light creates excellent perimeter and security lighting for building exteriors. The Wall Pack Light achieves energy savings of 50-85 percent over conventional lighting sources. The intelligent controller and options enable advanced energy management capabilities, thereby providing additional savings. The warranted 90,000-hour LED lumen life is superior to any other light available today. Imagine a light lasting for 20 years when used an average of 12 hours a day.

Technical Specifications

Dimensions	18.5"W x 8.5"H x 6"D (47.0 x 21.6 x 15.2 cm)
Mounting	Standard wall pack bolts
Light Output	3960 LED Device Lumens
Fixture Watts	40 watts
Efficacy	110 LED Device Lumens/Watt
CCT	5500K
Power Factor	>.95
Input Voltage	100-277V AC
Lumen Lifetime	90,000 hours (95% Luminous Flux)
Weight	9 lbs. (4 Kg)
Listings and Tests	UL and CE listed, suitable for damp locations. RoHS compliant, LM-80

Key Features & Benefits

- Significant Energy Savings – Replaces up to 200 watt fixture with 40 watt fixture
- Ideal for exterior wall mount lighting applications
- Replaces yellow or dim lighting with more visible “white light” for uniformity of coverage and enhancing security
- LEDs do not emit ultraviolet light so bugs are not attracted to the ActiveLED fixture
- Full cut-off directional light (dark-sky compliant)
- Environmentally safe lighting
 - Zero mercury content
 - Eliminates disposal of hazardous material
 - Facilitates LEED points
- Options
 - Digital Dimmer
 - Occupancy Sensor
 - Dusk-to-Dawn Sensor
 - Battery Backup
 - Finish: Black, Brown and Charcoal Grey, custom colors also available
- Warranty: 10 years on LED elements, 5 years on materials and workmanship
- Designed and manufactured exclusively by Ringdale

ActiveLED™ WP Series

Exterior Wall Pack Light

Photometric Light Level Data for WP-4551 LED Wall Pack

The schematics show the light level measurements for the WPH-4551 LED Wall Pack at a mounting height of 11'.

The data shows that the LED Wall Pack provides excellent coverage for 2-3 times its mounting height.

